

tamil nadu slum clearance board
 revised layout for the dhobikana scheme
 in t.s.no.11 of block saidapet and
 proposed layout for the godhammedu
 scheme in t.s.no.12 & 13 of block
 saidapet

scale: 1"=66'0" (1:800)

type design as per 3/78 (three storeyed with columns in ground floor)

dhobikana scheme	godhammedu scheme
(Under construction)	(proposed)
A 36 in one 36x5 = 180	A 36 in one 36x12 = 432
B 24 in one 24x1 = 24	B 24 in one 24x5 = 120
C 48 in one 48x1 = 48	
+ transit tenements 252	+ transit tenements - 184
total no. of tenements - 336	total no. of tenements - 736
extent: 0.56 hectare	extent: 1.3 hectare
density: 450 families/hectare	density: 424 families/hectare

land utilisation		land utilisation	
residential	0.28 hec 65%	residential	0.66 hec 51%
park & open spaces	0.056 " 10%	park & open spaces	0.09 hec 8%
pathways	0.140 " 25%	nursery school	0.12 hec 15%
total	0.56 hec 100%	primary school	0.09 hec 4%
		community centre	0.07 hec 4%
		shops	0.03 hec 2%
		roads & pathways	0.27 hec 20%
		total	1.30 hec 100%

NOTE - this revises the MMDA approved layout no. D2(L)/21416/89 dt 23-2-90

Dns 23-A/B
 L.O. 90

drawn by [Signature]
 23/5/90

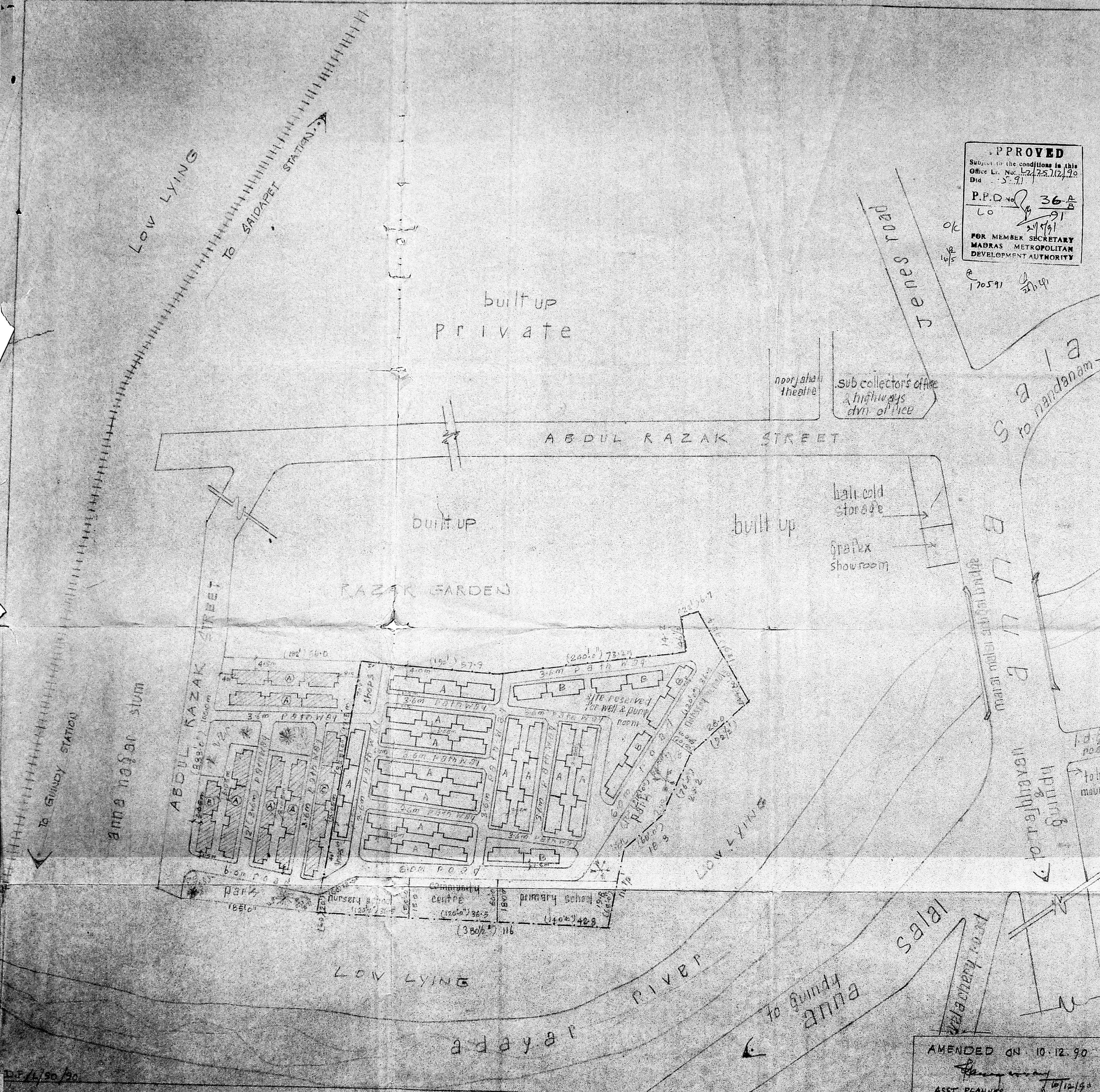
Asst. planner [Signature]
 23/5/90

deputy planner [Signature]
 23/5/90

APPROVED
 Subject to the conditions in this
 Office Lr. No. 22425/102/90
 Dt. 23.5.91

P.P.O. No. 36 A/B
 L.O. 91
 24/5/91

FOR MEMBER SECRETARY
 MADRAS METROPOLITAN
 DEVELOPMENT AUTHORITY



AMENDED ON 10.12.90
 ASST. PLANNER [Signature]
 10/12/90

supdt. engineer [Signature]
 chief engineer [Signature]

TAMIL NADU SLUMCLEARANCE BOARD
 PROPOSED TYPE DESIGN OF 30/78 (REVISED) FOR
 DHOBIKHANA, SAIDAPET.

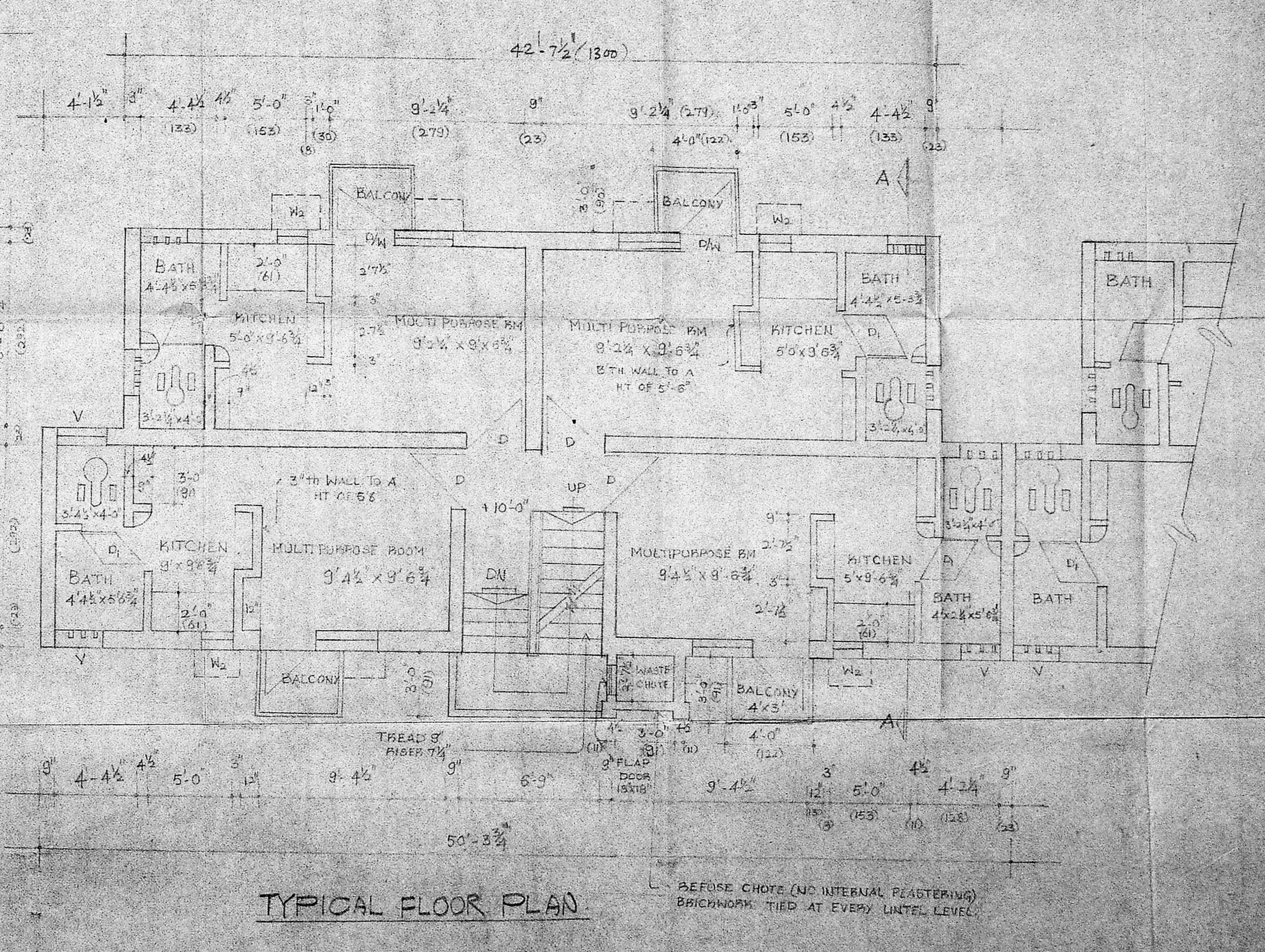
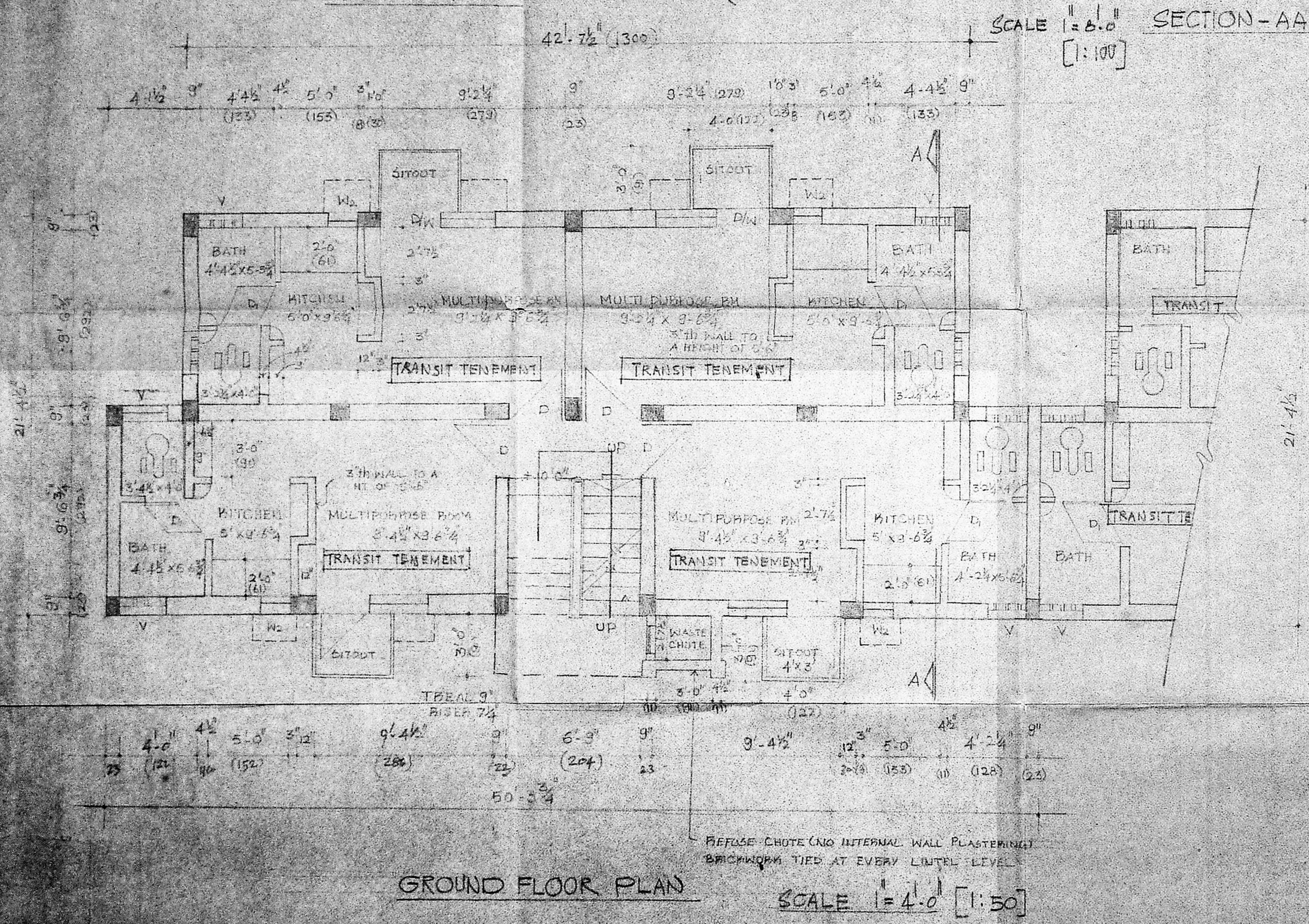
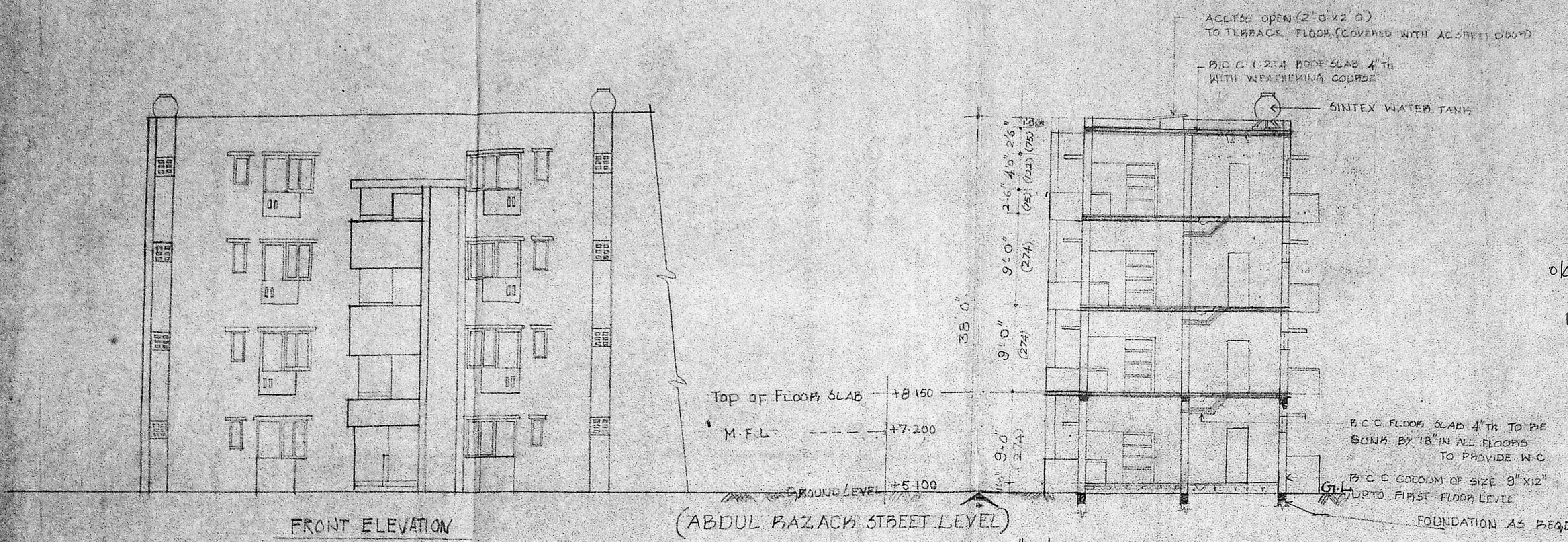
REFERENCE
 GROUND FLOOR FOR TRANSIT TENEMENTS
 PLINTH AREA - 21.55M²

APPROVED
 Subject to the conditions in this
 Office Lr. No. 42/25.11.78/119.
 Dtd. 5.9.78

P.P.D. No. 36 8/8
 LO

FOR MEMBER SECRETARY
 MADRAS METROPOLITAN
 DEVELOPMENT AUTHORITY

170591



PREPARED BY: [Signature]
 ASST. PLANNER 7/11/78

[Signature]
 DEPUTY PLANNER

[Signature]
 SUPERV. ENGINEER

[Signature]
 CHIEF ENGINEER